



WHEATLAND-CHILI CENTRAL SCHOOL DISTRICT

13 Beckwith Avenue, Scottsville, NY 14546

2011-2012 Monroe County Results English Language Arts and Math Grades 3-8 Assessment Executive Summary

Background

The New York State (NYS) **English Language Arts Assessments** (ELA 3-8) measure student progress toward meeting the ELA learning standards as a result of instruction in pre-kindergarten through grade 8. This assessment requires students to listen, read, and write for information and understanding, literary response and expression, and critical analysis and evaluation. All students answer multiple-choice questions that assess reading comprehension as well as knowledge of grammar, punctuation, and word usage. In addition, students respond in writing to short and extended response questions that assess reading comprehension and written language skills. Those students who are not making appropriate progress toward standards (i.e., scoring at Levels 1 or 2) will receive academic intervention services.

The New York State (NYS) **Mathematics Assessments** (Math 3-8) measure student achievement of the content, concepts, and skills in the K-8 Mathematics Core Curriculum to determine whether students are meeting New York State mathematics standards. Students are required to answer questions in multiple choice, constructed response, and extended constructed response formats. Those students who are not making appropriate progress toward standards (i.e., scoring at Levels 1 or 2) will receive academic intervention services.

The testing program has changed over the past three years, and will change again as we enter the 2012-2013 school year. The cut scores for the ELA and mathematics assessments were adjusted in 2010 from prior years, meaning that the results from the 2010 administration could not be directly compared to results from previous years. In 2011 we had a similar situation with our 2011 ELA and mathematics administration in that the number of performance indicators to be assessed on each test was expanded beyond those tested in prior years, affecting our ability to directly compare 2011 results with prior years.

In 2012 the number of test questions was increased to obtain more information about student achievement, and field test questions were included in the tests to improve future assessments. Beginning with the 2013 test administration, the test questions will be fully aligned with the Common Core Learning Standards in ELA and Mathematics, and will represent a different test structure from all prior years. Although these adjustments over time affect our ability to directly compare results from year to year, the assessments continue to provide us with valuable information upon which to make instructional decisions for and improve the learning of our students.

Findings for 2011-2012 (Compared to 19 Districts in Monroe County and 9 Monroe #2 BOCES Districts):

- Percentage of students meeting standards:
 - 58.8% in **ELA 3**, placing 15th within the County; and 6th within Monroe #2 BOCES.
 - 60.8% in **Math 3**, placing 16th within the County; and 7th within Monroe #2 BOCES.

- 54.1% in **ELA 4**, placing 19th within the County; and 9th within Monroe #2 BOCES.
- 72.1% in **Math 4**, placing 14th within the County; and 6th within Monroe #2 BOCES.

- 61.2% in **ELA 5**, placing 14th within the County; and 6th within Monroe #2 BOCES.
- 67.4% in **Math 5**, placing 14th within the County; and 6th within Monroe #2 BOCES.

- 50.0% in **ELA 6**, placing 18th within the County; and 8th within Monroe #2 BOCES.
- 77.8% in **Math 6**, placing 10th within the County; and 5th within Monroe #2 BOCES.

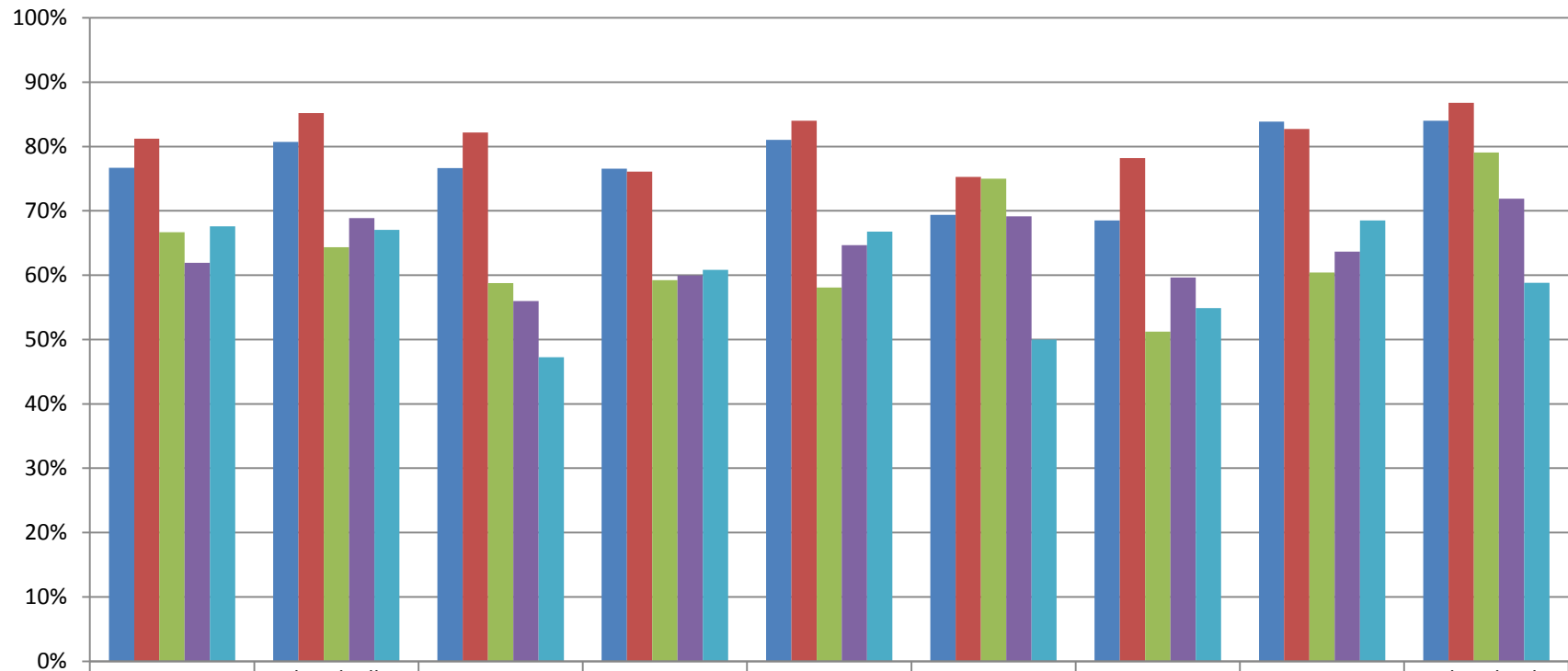
- 63.8% in **ELA 7**, placing 10th within the County; and 3rd within Monroe #2 BOCES.
- 75.0% in **Math 7**, placing 12th within the County; and 4th within Monroe #2 BOCES.

- 56.1% in **ELA 8**, placing 16th within the County; and 7th within Monroe #2 BOCES.
- 47.0% in **Math 8**, placing 18th within the County; and 8th within Monroe #2 BOCES.

ELA 3 2008 - 2012

Combined Percent at Levels 3 & 4

Monroe 2 BOCES Component Districts

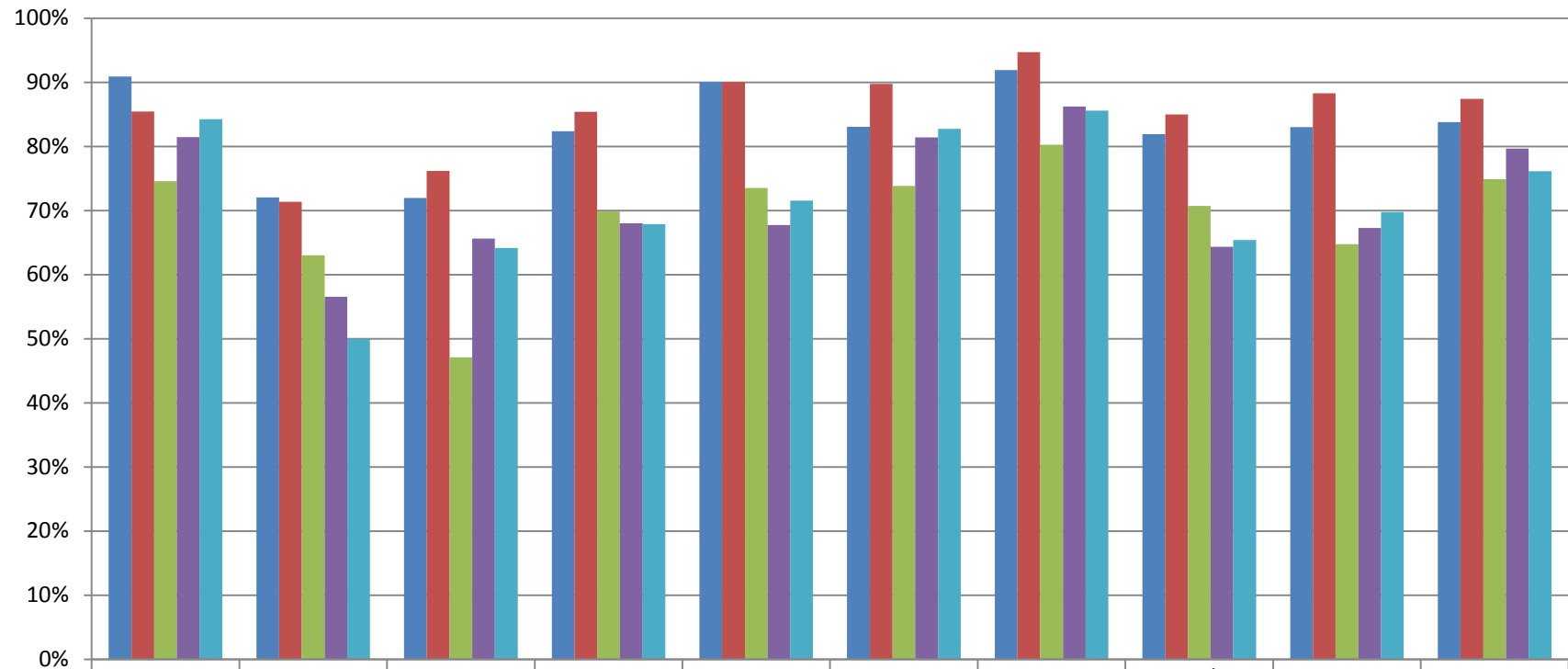


	Brockport	Churchville Chili	Gates Chili	Greece	Hilton	Holley	Kendall	Spencerport	Wheatland-Chili
06/30/08	76.7%	80.7%	76.6%	76.6%	81.0%	69.4%	68.5%	83.9%	84.0%
06/30/09	81.2%	85.2%	82.2%	76.1%	84.0%	75.3%	78.2%	82.7%	86.8%
06/30/10	66.7%	64.3%	58.8%	59.2%	58.1%	75.0%	51.2%	60.4%	79.1%
06/30/11	61.9%	68.9%	56.0%	60.0%	64.7%	69.1%	59.6%	63.7%	71.9%
06/30/12	67.6%	67.0%	47.2%	60.9%	66.8%	50.0%	54.9%	68.5%	58.8%

ELA 3 2008 - 2012

Combined Percent at Levels 3 & 4

Monroe 1 BOCES Component Districts

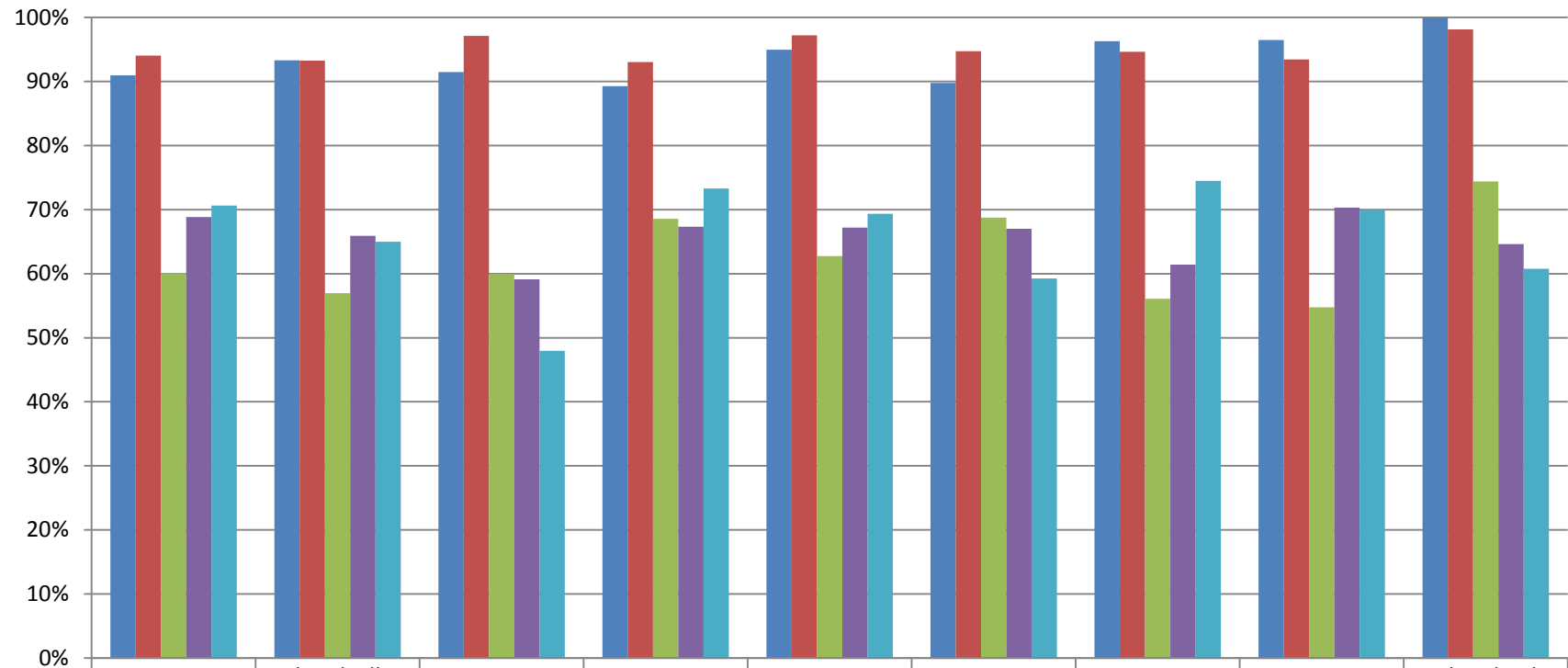


	Brighton	East Irondequoit	East Rochester	Fairport	Honeoye Falls Lima	Penfield	Pittsford	Rush Henrietta	Webster	West Irondequoit
06/30/08	90.9%	72.1%	72.0%	82.4%	90.1%	83.1%	92.0%	81.9%	83.0%	83.8%
06/30/09	85.5%	71.4%	76.2%	85.4%	90.1%	89.8%	94.7%	85.0%	88.3%	87.5%
06/30/10	74.6%	63.0%	47.1%	69.9%	73.5%	73.9%	80.3%	70.7%	64.8%	74.9%
06/30/11	81.5%	56.6%	65.7%	68.0%	67.7%	81.4%	86.3%	64.4%	67.3%	79.7%
06/30/12	84.3%	50.0%	64.2%	67.9%	71.6%	82.8%	85.6%	65.4%	69.8%	76.2%

Math 3 2008 - 2012

Combined Percent at Levels 3 & 4

Monroe 2 BOCES Component Districts

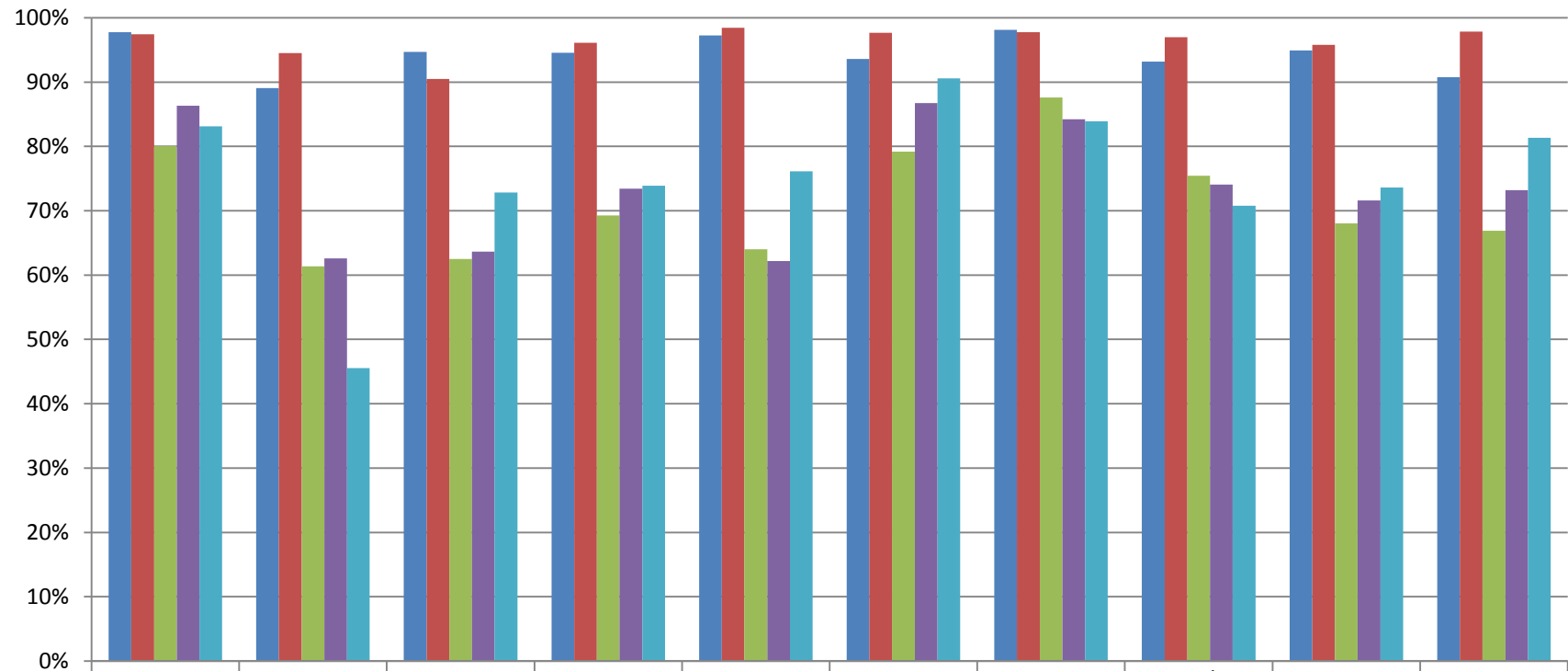


	Brockport	Churchville Chili	Gates Chili	Greece	Hilton	Holley	Kendall	Spencerport	Wheatland-Chili
06/30/08	91.0%	93.3%	91.5%	89.2%	95.0%	89.8%	96.3%	96.5%	100.0%
06/30/09	94.1%	93.3%	97.1%	93.0%	97.2%	94.7%	94.6%	93.5%	98.1%
06/30/10	60.1%	57.0%	59.9%	68.6%	62.7%	68.8%	56.1%	54.7%	74.4%
06/30/11	68.9%	65.9%	59.1%	67.3%	67.2%	67.0%	61.4%	70.3%	64.6%
06/30/12	70.6%	65.0%	48.0%	73.3%	69.3%	59.3%	74.5%	70.0%	60.8%

Math 3 2008 - 2012

Combined Percent at Levels 3 & 4

Monroe 1 BOCES Component Districts

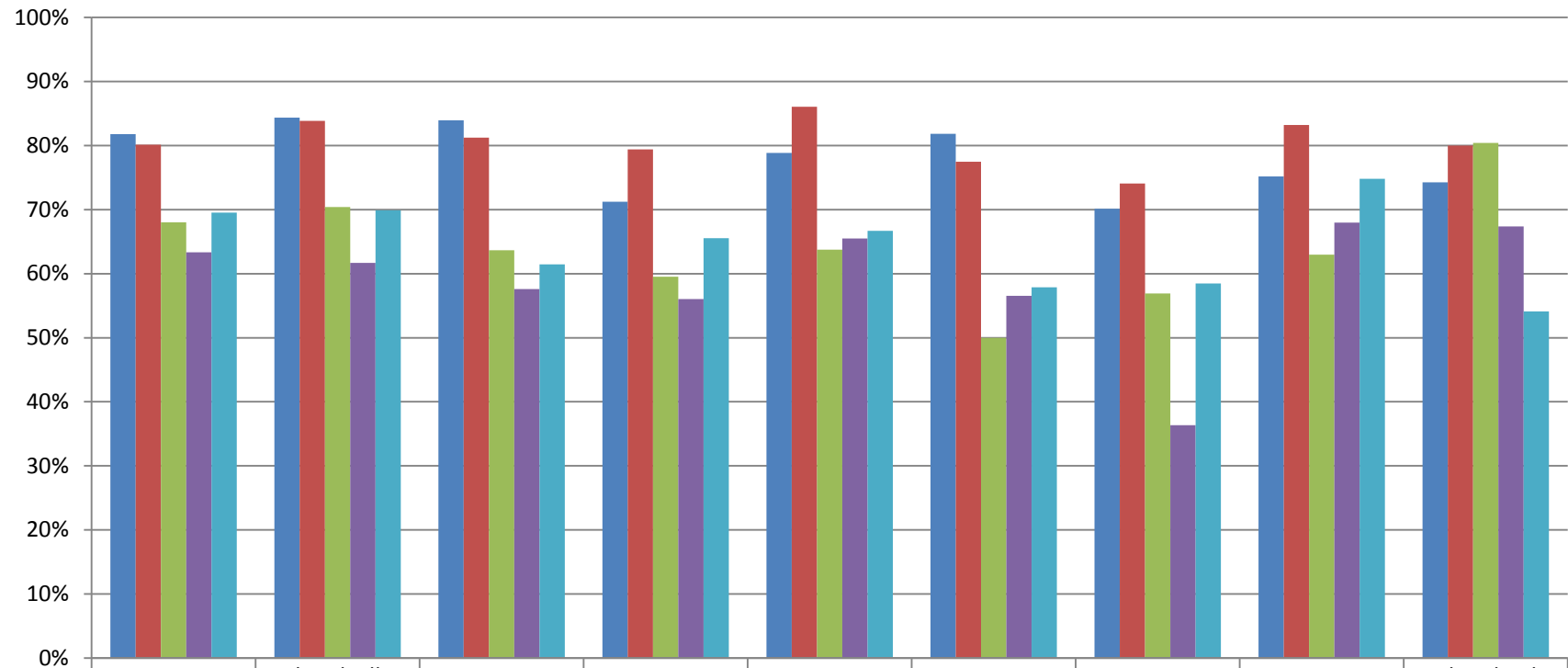


06/30/08	97.7%	89.1%	94.7%	94.5%	97.2%	93.6%	98.1%	93.2%	94.9%	90.8%
06/30/09	97.4%	94.5%	90.5%	96.1%	98.4%	97.7%	97.7%	97.0%	95.8%	97.8%
06/30/10	80.1%	61.4%	62.5%	69.2%	64.0%	79.2%	87.6%	75.4%	68.0%	66.9%
06/30/11	86.3%	62.6%	63.6%	73.4%	62.2%	86.7%	84.2%	74.1%	71.6%	73.2%
06/30/12	83.1%	45.5%	72.8%	73.9%	76.1%	90.6%	83.9%	70.8%	73.6%	81.3%

ELA 4 2008 - 2012

Combined Percent at Levels 3 & 4

Monroe 2 BOCES Component Districts

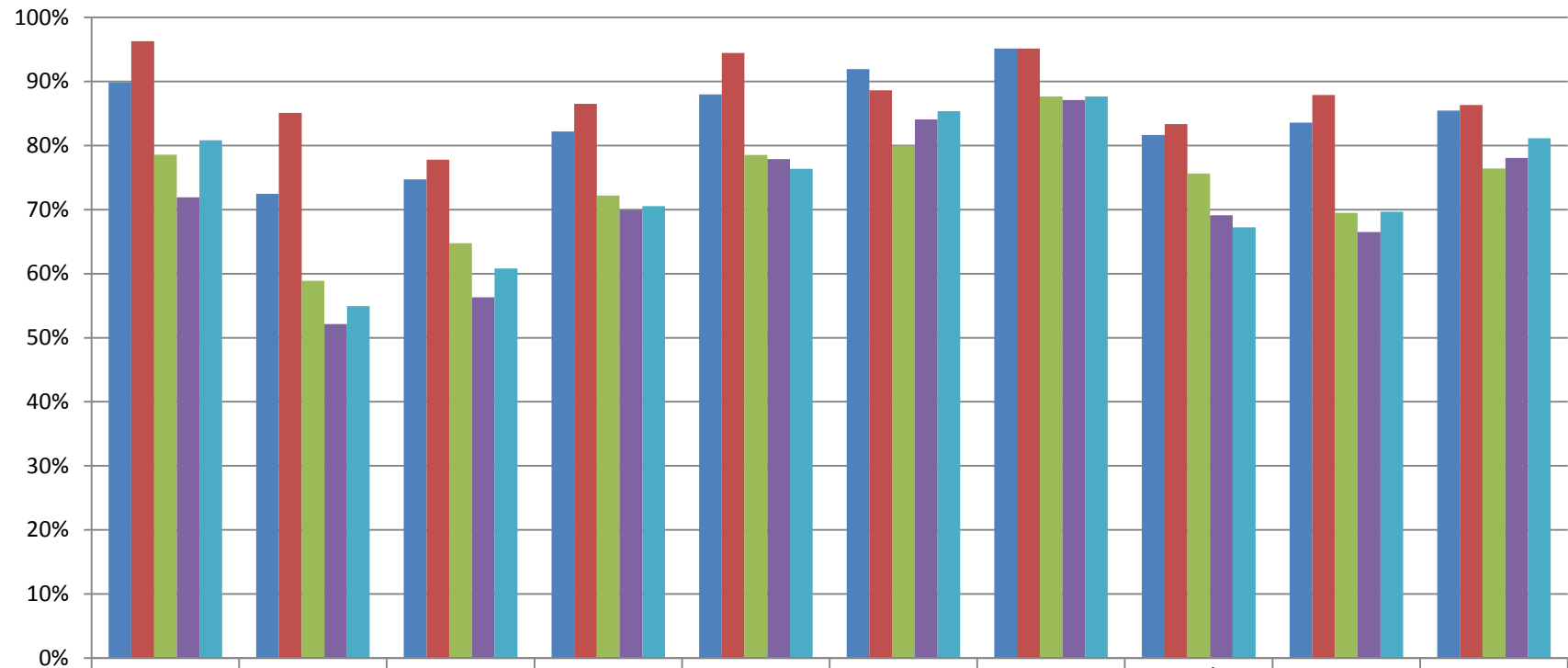


	Brockport	Churchville Chili	Gates Chili	Greece	Hilton	Holley	Kendall	Spencerport	Wheatland-Chili
06/30/08	81.8%	84.4%	83.9%	71.2%	78.9%	81.8%	70.1%	75.2%	74.2%
06/30/09	80.1%	83.8%	81.3%	79.4%	86.1%	77.5%	74.1%	83.2%	80.0%
06/30/10	68.0%	70.4%	63.7%	59.5%	63.7%	50.0%	56.9%	63.0%	80.4%
06/30/11	63.4%	61.7%	57.6%	56.0%	65.5%	56.5%	36.4%	68.0%	67.4%
06/30/12	69.5%	69.9%	61.4%	65.5%	66.7%	57.9%	58.5%	74.8%	54.1%

ELA 4 2008 - 2012

Combined Percent at Levels 3 & 4

Monroe 1 BOCES Component Districts

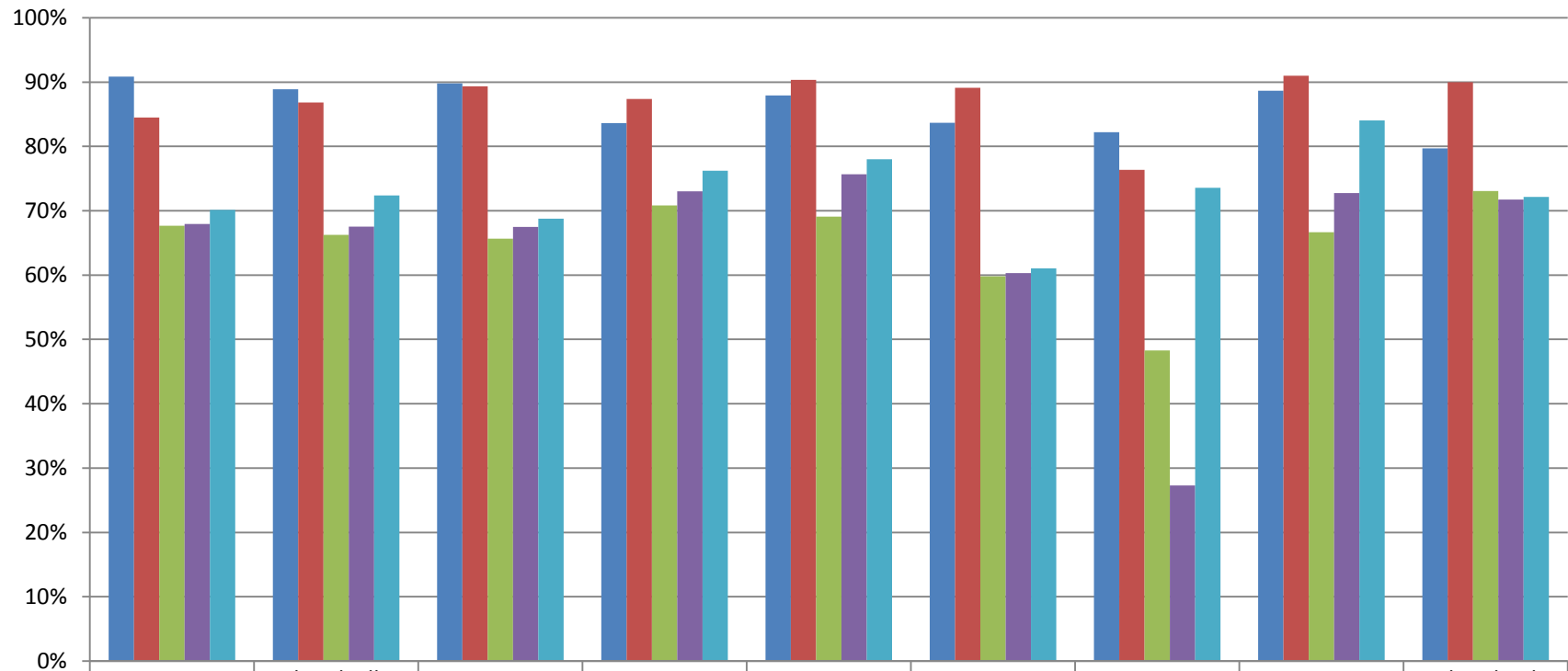


	Brighton	East Irondequoit	East Rochester	Fairport	Honeoye Falls Lima	Penfield	Pittsford	Rush Henrietta	Webster	West Irondequoit
06/30/08	89.9%	72.5%	74.7%	82.2%	88.0%	91.9%	95.2%	81.6%	83.6%	85.5%
06/30/09	96.3%	85.1%	77.8%	86.5%	94.4%	88.6%	95.2%	83.3%	87.9%	86.3%
06/30/10	78.6%	58.9%	64.8%	72.2%	78.5%	79.9%	87.7%	75.7%	69.5%	76.4%
06/30/11	71.9%	52.2%	56.3%	69.9%	77.9%	84.1%	87.1%	69.1%	66.5%	78.0%
06/30/12	80.8%	55.0%	60.8%	70.5%	76.4%	85.4%	87.7%	67.2%	69.7%	81.2%

Math 4 2008 - 2012

Combined Percent at Levels 3 & 4

Monroe 2 BOCES Component Districts

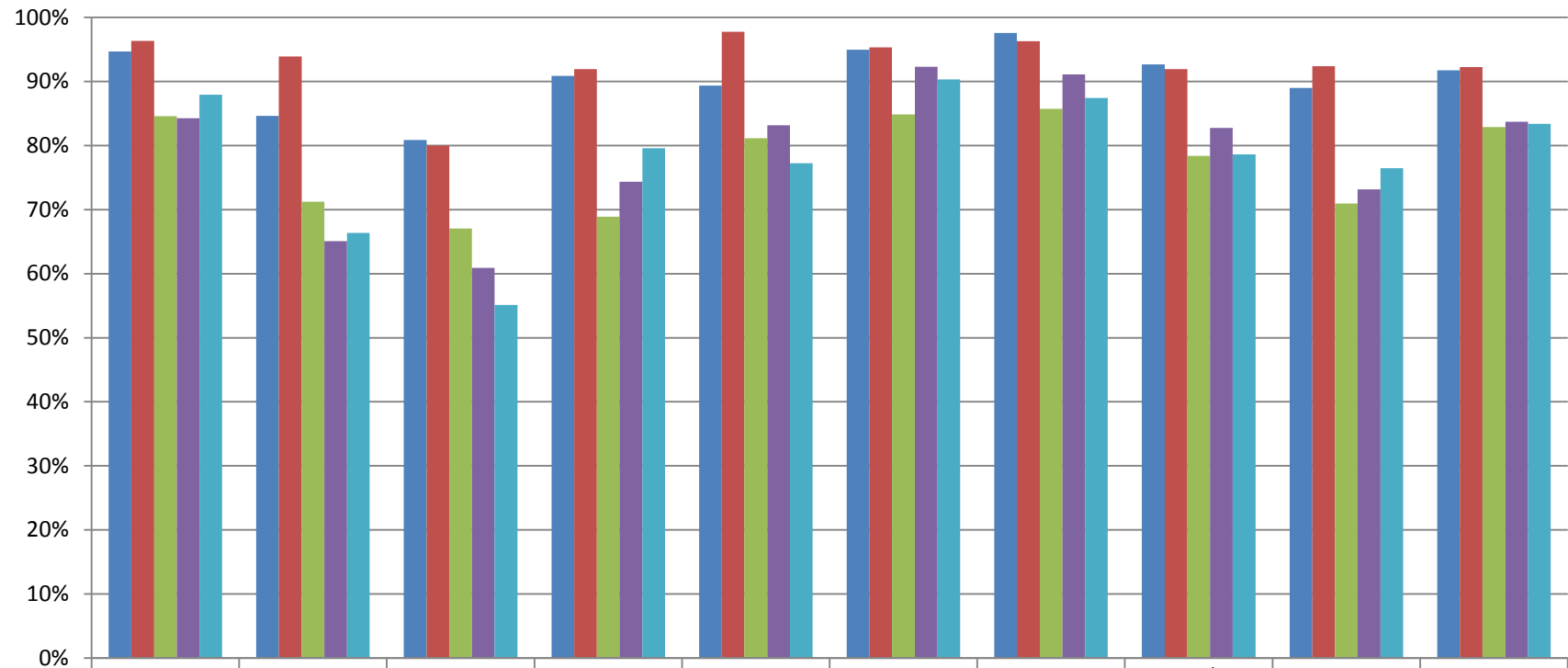


	Brockport	Churchville Chili	Gates Chili	Greece	Hilton	Holley	Kendall	Spencerport	Wheatland-Chili
06/30/08	90.8%	88.9%	89.8%	83.6%	87.9%	83.7%	82.2%	88.6%	79.7%
06/30/09	84.5%	86.8%	89.3%	87.4%	90.3%	89.1%	76.4%	91.0%	90.0%
06/30/10	67.7%	66.3%	65.6%	70.8%	69.1%	59.8%	48.3%	66.7%	73.1%
06/30/11	67.9%	67.5%	67.5%	73.0%	75.7%	60.3%	27.3%	72.8%	71.7%
06/30/12	70.1%	72.4%	68.8%	76.2%	78.0%	61.1%	73.6%	84.1%	72.1%

Math 4 2008 - 2012

Combined Percent at Levels 3 & 4

Monroe 1 BOCES Component Districts

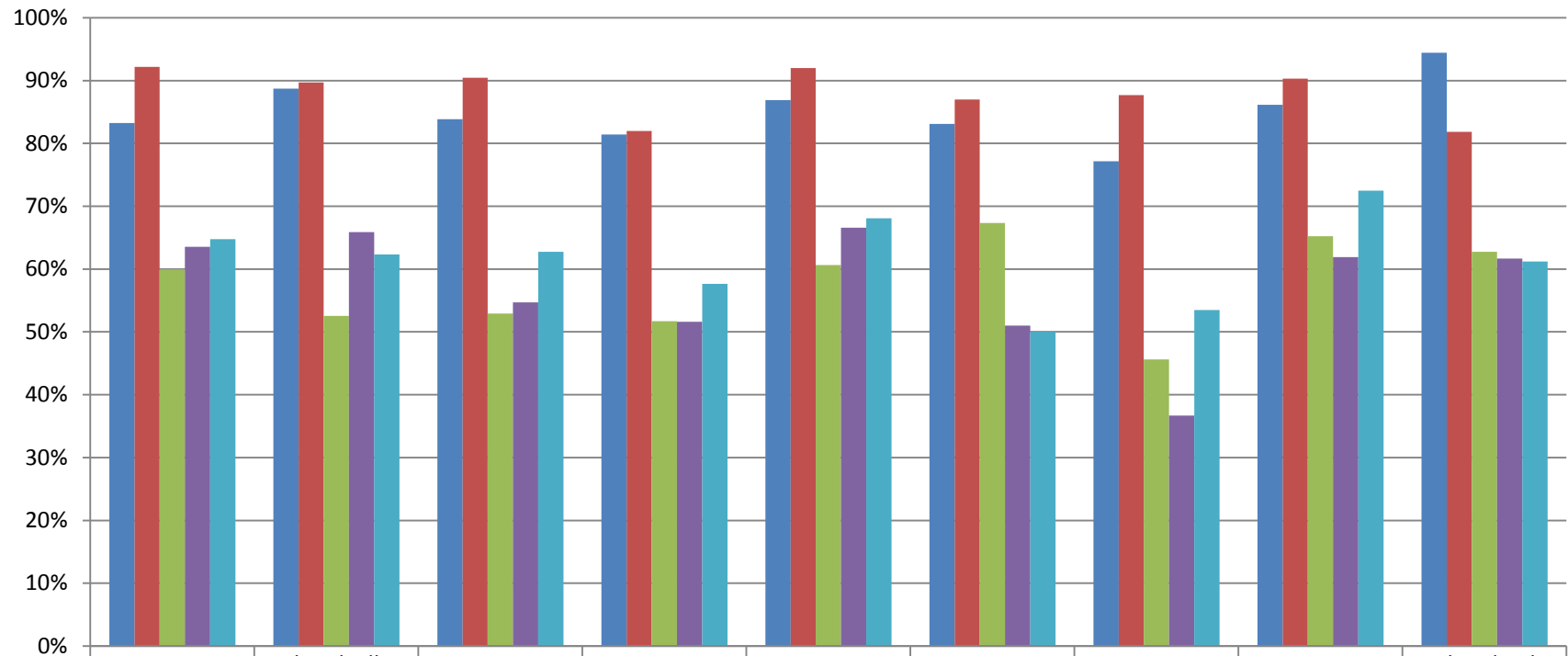


	Brighton	East Irondequoit	East Rochester	Fairport	Honeoye Falls Lima	Penfield	Pittsford	Rush Henrietta	Webster	West Irondequoit
06/30/08	94.7%	84.6%	80.9%	90.9%	89.4%	95.0%	97.6%	92.6%	89.0%	91.8%
06/30/09	96.3%	93.9%	80.0%	91.9%	97.8%	95.3%	96.3%	91.9%	92.4%	92.3%
06/30/10	84.6%	71.2%	67.0%	68.9%	81.2%	84.8%	85.7%	78.4%	70.9%	82.9%
06/30/11	84.3%	65.1%	60.9%	74.4%	83.2%	92.3%	91.1%	82.7%	73.1%	83.7%
06/30/12	87.9%	66.4%	55.1%	79.6%	77.3%	90.3%	87.4%	78.6%	76.5%	83.4%

ELA 5 2008 - 2012

Combined Percent at Levels 3 & 4

Monroe 2 BOCES Component Districts

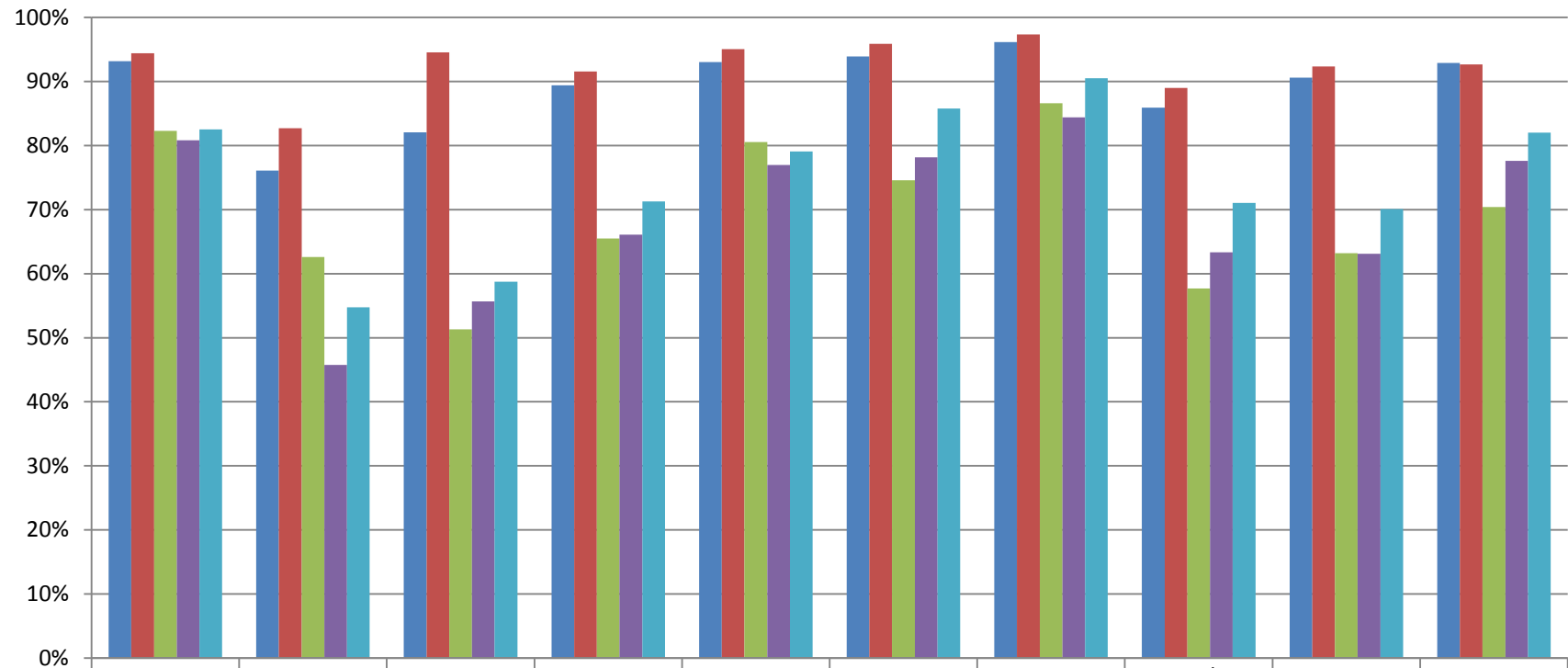


	Brockport	Churchville Chili	Gates Chili	Greece	Hilton	Holley	Kendall	Spencerport	Wheatland-Chili
06/30/08	83.2%	88.7%	83.8%	81.4%	86.9%	83.1%	77.1%	86.1%	94.4%
06/30/09	92.2%	89.7%	90.4%	82.0%	92.0%	87.0%	87.7%	90.3%	81.8%
06/30/10	59.9%	52.5%	52.9%	51.7%	60.6%	67.3%	45.6%	65.2%	62.7%
06/30/11	63.5%	65.9%	54.7%	51.6%	66.6%	51.0%	36.7%	61.9%	61.7%
06/30/12	64.8%	62.3%	62.7%	57.6%	68.1%	50.0%	53.5%	72.5%	61.2%

ELA 5 2008 - 2012

Combined Percent at Levels 3 & 4

Monroe 1 BOCES Component Districts

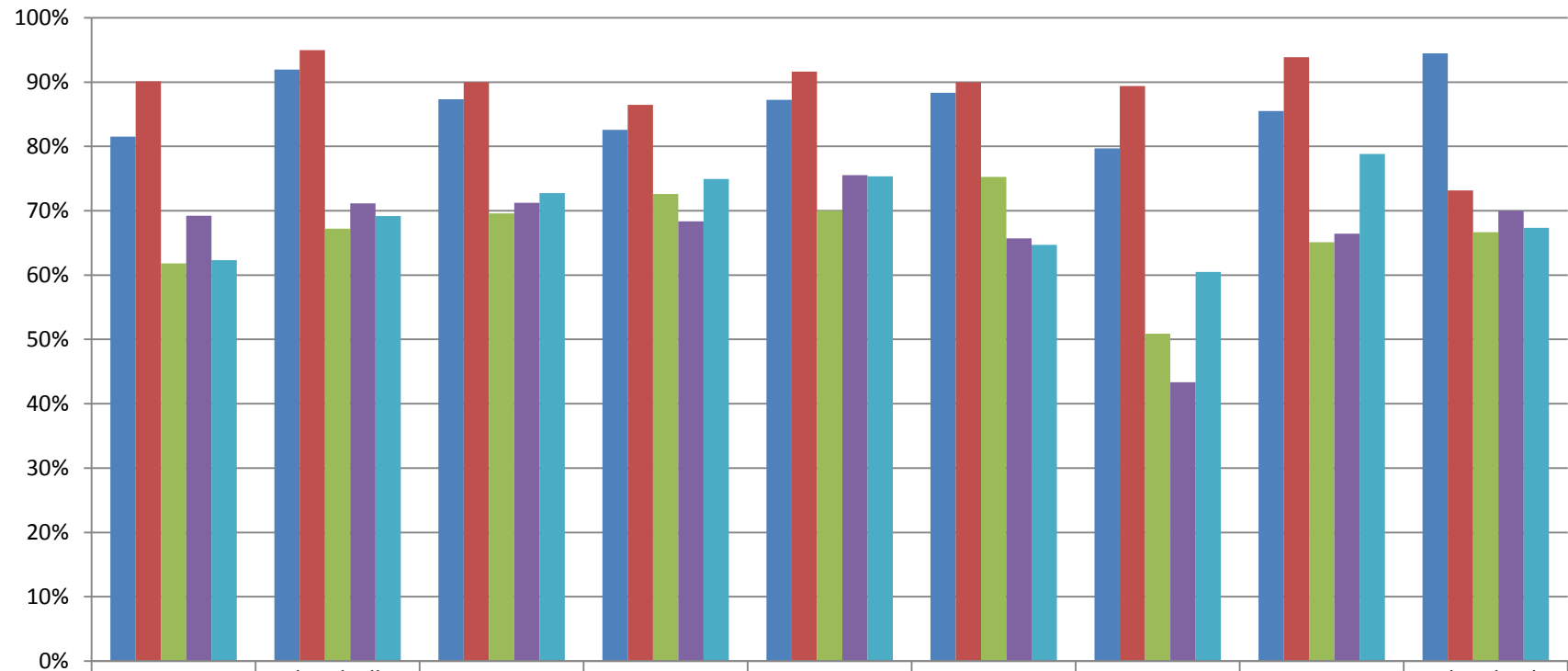


	Brighton	East Irondequoit	East Rochester	Fairport	Honeoye Falls Lima	Penfield	Pittsford	Rush Henrietta	Webster	West Irondequoit
06/30/08	93.2%	76.1%	82.1%	89.4%	93.0%	93.9%	96.1%	85.9%	90.6%	92.9%
06/30/09	94.4%	82.7%	94.6%	91.6%	95.1%	95.9%	97.4%	89.0%	92.3%	92.7%
06/30/10	82.3%	62.6%	51.3%	65.5%	80.5%	74.6%	86.6%	57.7%	63.2%	70.4%
06/30/11	80.8%	45.8%	55.7%	66.1%	77.0%	78.2%	84.4%	63.3%	63.1%	77.6%
06/30/12	82.5%	54.8%	58.8%	71.3%	79.1%	85.8%	90.5%	71.0%	70.1%	82.0%

Math 5 2008 - 2012

Combined Percent at Levels 3 & 4

Monroe 2 BOCES Component Districts

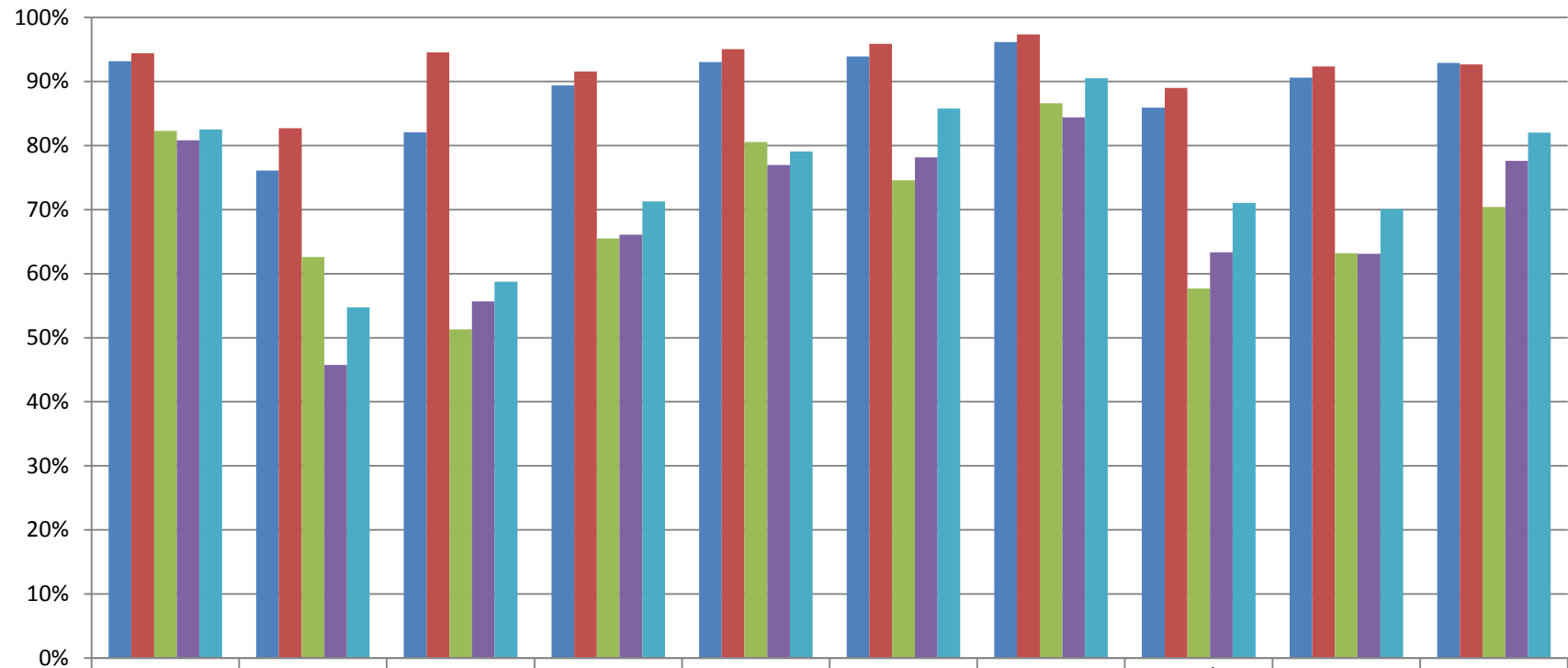


	Brockport	Churchville Chili	Gates Chili	Greece	Hilton	Holley	Kendall	Spencerport	Wheatland-Chili
06/30/08	81.5%	91.9%	87.3%	82.6%	87.2%	88.3%	79.7%	85.5%	94.4%
06/30/09	90.1%	95.0%	90.0%	86.4%	91.6%	90.0%	89.4%	93.9%	73.1%
06/30/10	61.8%	67.2%	69.6%	72.6%	70.0%	75.2%	50.9%	65.1%	66.7%
06/30/11	69.2%	71.1%	71.3%	68.4%	75.5%	65.7%	43.3%	66.4%	70.0%
06/30/12	62.3%	69.2%	72.8%	74.9%	75.4%	64.7%	60.5%	78.8%	67.4%

Math 5 2008 - 2012

Combined Percent at Levels 3 & 4

Monroe 1 BOCES Component Districts

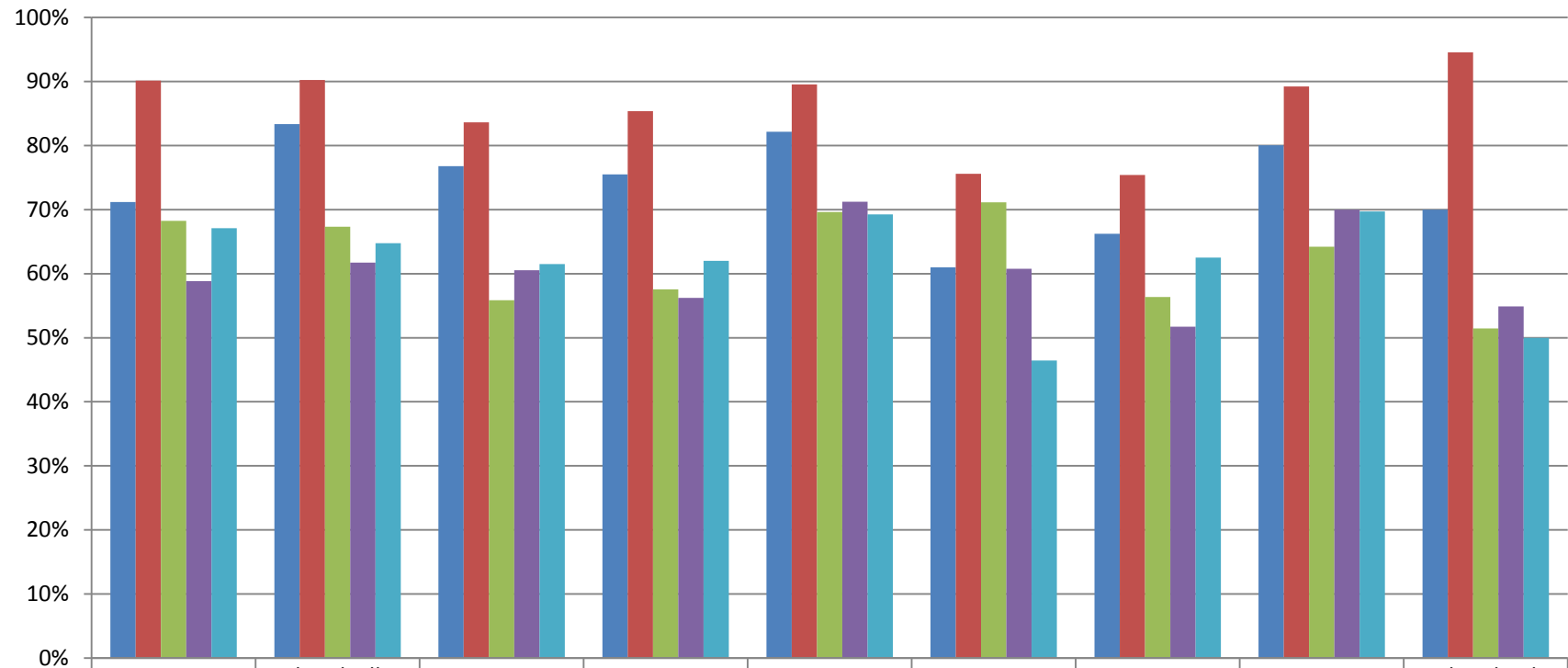


	Brighton	East Irondequoit	East Rochester	Fairport	Honeoye Falls Lima	Penfield	Pittsford	Rush Henrietta	Webster	West Irondequoit
06/30/08	93.2%	76.1%	82.1%	89.4%	93.0%	93.9%	96.1%	85.9%	90.6%	92.9%
06/30/09	94.4%	82.7%	94.6%	91.6%	95.1%	95.9%	97.4%	89.0%	92.3%	92.7%
06/30/10	82.3%	62.6%	51.3%	65.5%	80.5%	74.6%	86.6%	57.7%	63.2%	70.4%
06/30/11	80.8%	45.8%	55.7%	66.1%	77.0%	78.2%	84.4%	63.3%	63.1%	77.6%
06/30/12	82.5%	54.8%	58.8%	71.3%	79.1%	85.8%	90.5%	71.0%	70.1%	82.0%

ELA 6 2008 - 2012

Combined Percent at Levels 3 & 4

Monroe 2 BOCES Component Districts

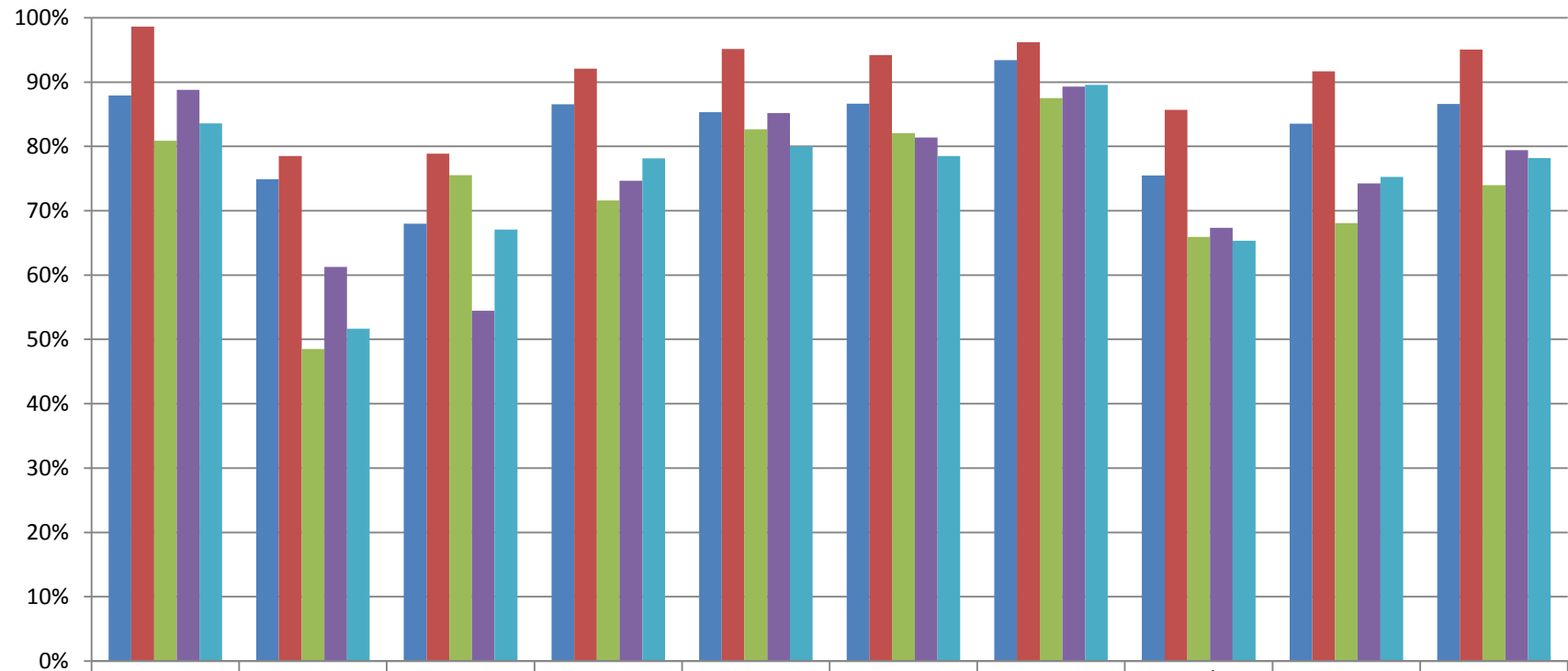


	Brockport	Churchville Chili	Gates Chili	Greece	Hilton	Holley	Kendall	Spencerport	Wheatland-Chili
06/30/08	71.2%	83.3%	76.8%	75.5%	82.1%	61.0%	66.2%	80.1%	70.0%
06/30/09	90.2%	90.2%	83.6%	85.4%	89.6%	75.6%	75.4%	89.2%	94.5%
06/30/10	68.3%	67.3%	55.9%	57.6%	69.6%	71.1%	56.3%	64.2%	51.4%
06/30/11	58.8%	61.7%	60.5%	56.2%	71.3%	60.7%	51.7%	70.0%	54.9%
06/30/12	67.1%	64.8%	61.5%	62.0%	69.3%	46.5%	62.5%	69.7%	50.0%

ELA 6 2008 - 2012

Combined Percent at Levels 3 & 4

Monroe 1 BOCES Component Districts

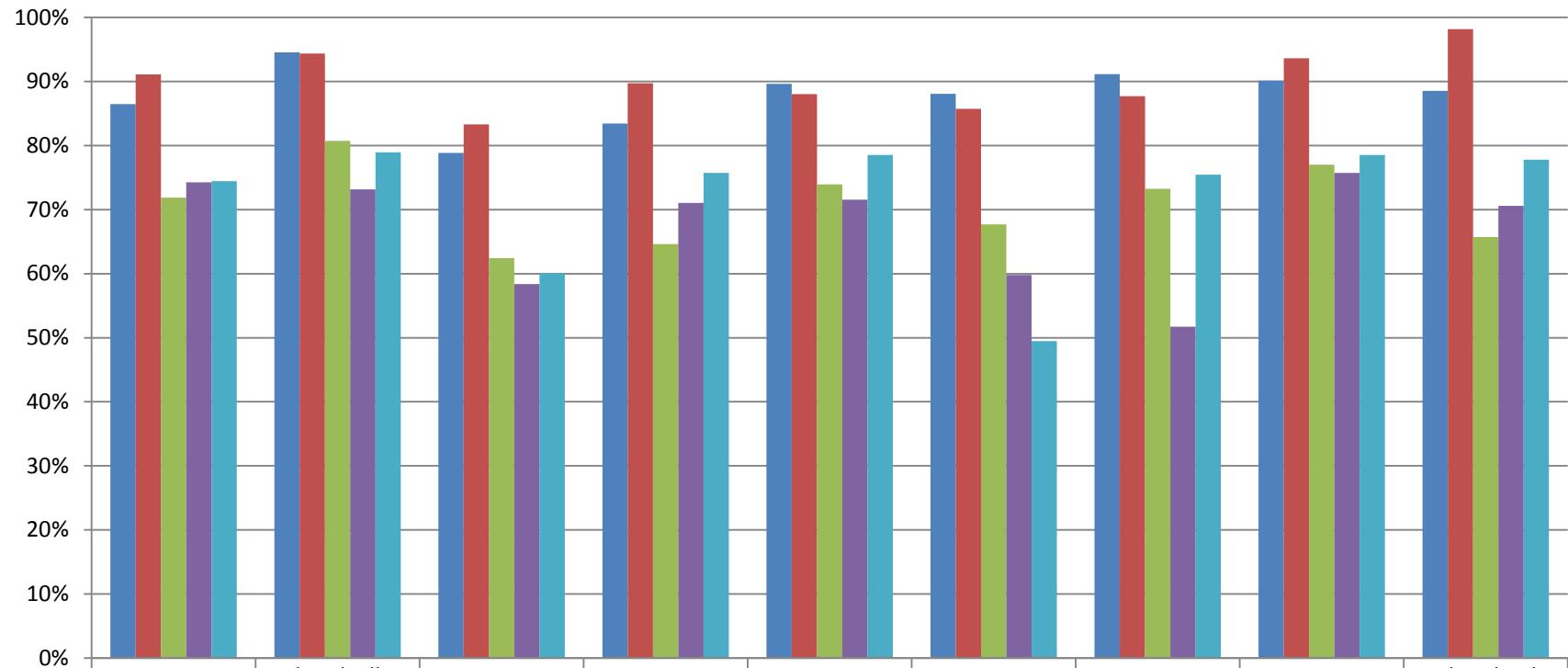


	Brighton	East Irondequoit	East Rochester	Fairport	Honeoye Falls Lima	Penfield	Pittsford	Rush Henrietta	Webster	West Irondequoit
06/30/08	87.9%	74.9%	68.0%	86.6%	85.3%	86.6%	93.4%	75.5%	83.6%	86.6%
06/30/09	98.6%	78.5%	78.9%	92.1%	95.2%	94.2%	96.2%	85.7%	91.7%	95.1%
06/30/10	80.9%	48.5%	75.5%	71.6%	82.7%	82.1%	87.5%	65.9%	68.1%	74.0%
06/30/11	88.8%	61.3%	54.4%	74.7%	85.2%	81.4%	89.3%	67.3%	74.2%	79.4%
06/30/12	83.6%	51.7%	67.1%	78.2%	80.0%	78.5%	89.6%	65.3%	75.3%	78.2%

Math 6 2008 - 2012

Combined Percent at Levels 3 & 4

Monroe 2 BOCES Component Districts

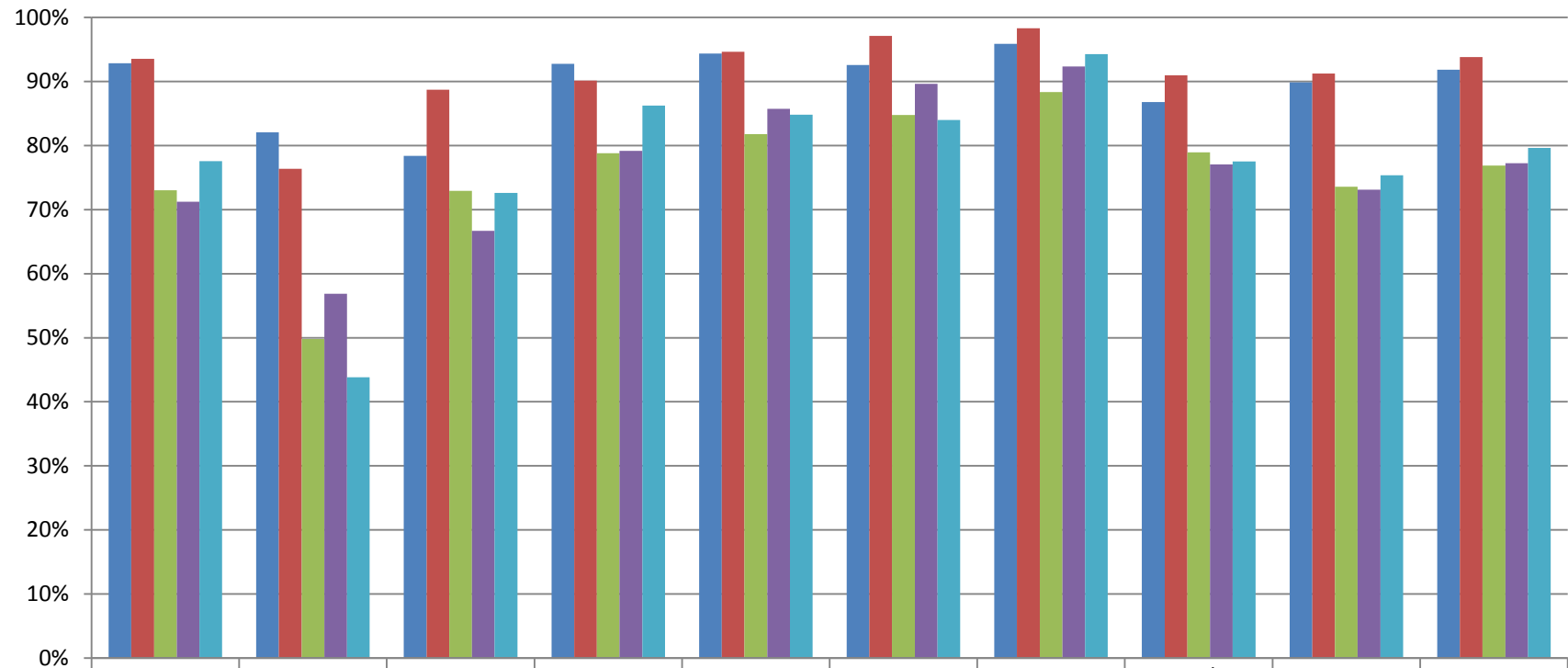


	Brockport	Churchville Chili	Gates Chili	Greece	Hilton	Holley	Kendall	Spencerport	Wheatland- Chili
06/30/08	86.5%	94.6%	78.8%	83.4%	89.7%	88.1%	91.1%	90.2%	88.5%
06/30/09	91.1%	94.4%	83.3%	89.7%	88.0%	85.7%	87.7%	93.6%	98.2%
06/30/10	71.9%	80.7%	62.4%	64.6%	73.9%	67.7%	73.2%	77.0%	65.7%
06/30/11	74.3%	73.2%	58.4%	71.1%	71.6%	59.8%	51.7%	75.7%	70.6%
06/30/12	74.4%	78.9%	60.1%	75.8%	78.5%	49.5%	75.4%	78.6%	77.8%

Math 6 2008 - 2012

Combined Percent at Levels 3 & 4

Monroe 1 BOCES Component Districts

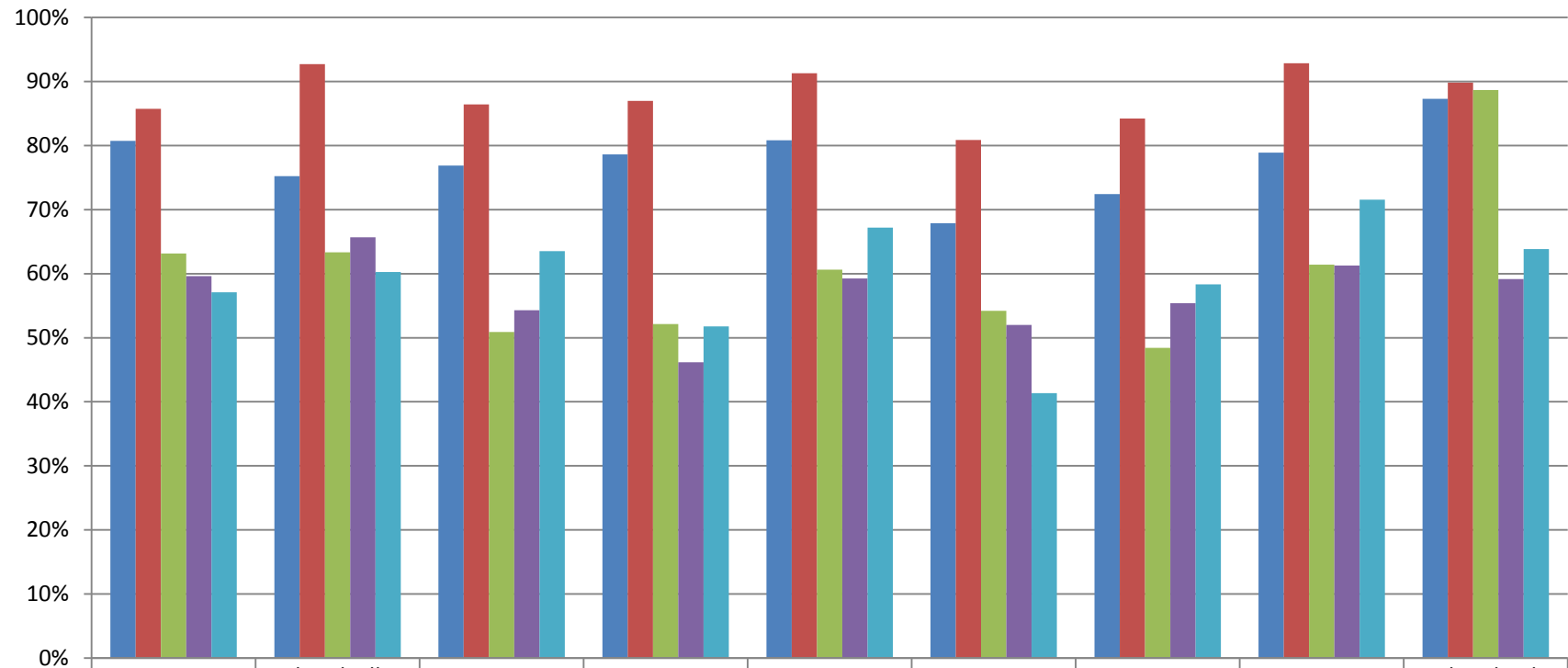


	Brighton	East Irondequoit	East Rochester	Fairport	Honeoye Falls Lima	Penfield	Pittsford	Rush Henrietta	Webster	West Irondequoit
06/30/08	92.9%	82.1%	78.4%	92.7%	94.4%	92.6%	95.9%	86.8%	89.9%	91.8%
06/30/09	93.5%	76.3%	88.7%	90.1%	94.7%	97.1%	98.3%	91.0%	91.2%	93.8%
06/30/10	73.0%	49.8%	72.9%	78.8%	81.8%	84.8%	88.4%	78.9%	73.6%	76.9%
06/30/11	71.2%	56.8%	66.7%	79.2%	85.7%	89.6%	92.4%	77.1%	73.1%	77.2%
06/30/12	77.6%	43.8%	72.6%	86.2%	84.8%	84.0%	94.3%	77.5%	75.4%	79.6%

ELA 7 2008 - 2012

Combined Percent at Levels 3 & 4

Monroe 2 BOCES Component Districts

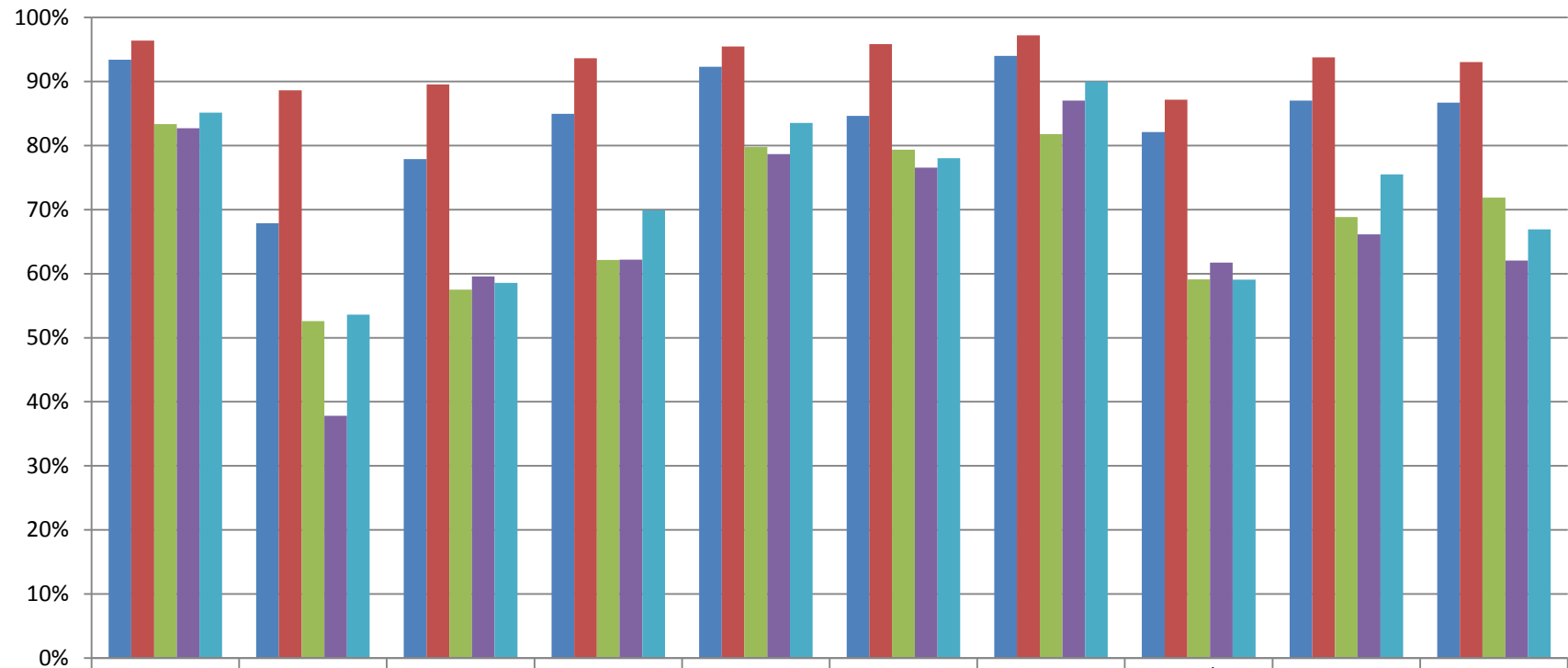


	Brockport	Churchville Chili	Gates Chili	Greece	Hilton	Holley	Kendall	Spencerport	Wheatland-Chili
06/30/08	80.7%	75.2%	76.9%	78.6%	80.8%	67.9%	72.4%	78.9%	87.3%
06/30/09	85.7%	92.7%	86.4%	87.0%	91.3%	80.9%	84.2%	92.8%	89.8%
06/30/10	63.2%	63.3%	50.9%	52.1%	60.6%	54.2%	48.4%	61.4%	88.7%
06/30/11	59.6%	65.7%	54.3%	46.2%	59.2%	52.0%	55.4%	61.3%	59.2%
06/30/12	57.1%	60.3%	63.5%	51.8%	67.2%	41.4%	58.3%	71.6%	63.8%

ELA 7 2008 - 2012

Combined Percent at Levels 3 & 4

Monroe 1 BOCES Component Districts

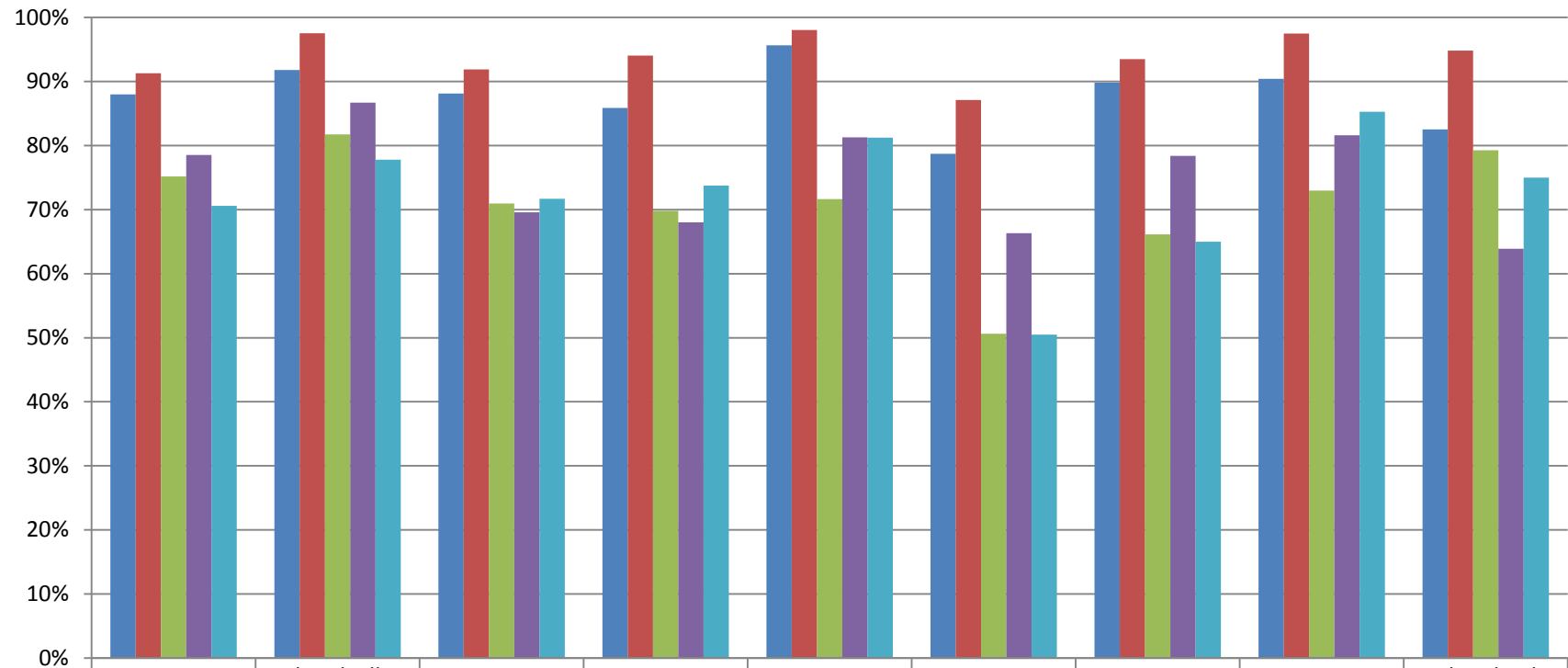


06/30/08	93.4%	67.9%	77.9%	85.0%	92.3%	84.7%	94.0%	82.1%	87.0%	86.7%
06/30/09	96.4%	88.6%	89.5%	93.6%	95.5%	95.8%	97.2%	87.2%	93.8%	93.0%
06/30/10	83.3%	52.6%	57.5%	62.2%	79.8%	79.4%	81.8%	59.1%	68.8%	71.9%
06/30/11	82.7%	37.8%	59.6%	62.2%	78.7%	76.5%	87.0%	61.8%	66.1%	62.0%
06/30/12	85.1%	53.6%	58.5%	69.9%	83.5%	78.0%	90.0%	59.1%	75.5%	66.9%

Math 7 2008 - 2012

Combined Percent at Levels 3 & 4

Monroe 2 BOCES Component Districts

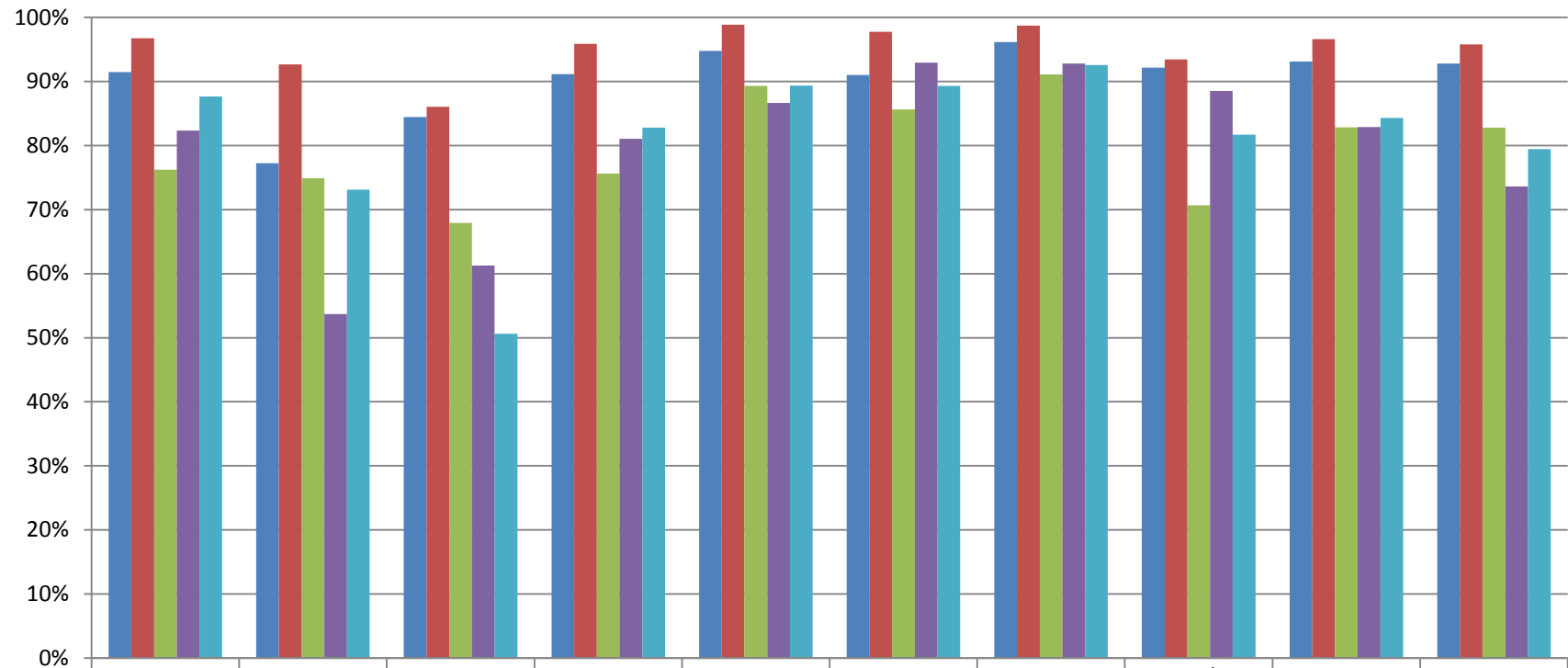


	Brockport	Churchville Chili	Gates Chili	Greece	Hilton	Holley	Kendall	Spencerport	Wheatland-Chili
06/30/08	88.0%	91.8%	88.1%	85.9%	95.7%	78.7%	89.8%	90.4%	82.5%
06/30/09	91.3%	97.5%	91.9%	94.1%	98.0%	87.1%	93.5%	97.5%	94.8%
06/30/10	75.2%	81.8%	71.0%	69.8%	71.6%	50.6%	66.2%	73.0%	79.2%
06/30/11	78.5%	86.7%	69.6%	68.0%	81.3%	66.3%	78.4%	81.6%	63.9%
06/30/12	70.6%	77.8%	71.7%	73.7%	81.3%	50.5%	65.0%	85.3%	75.0%

Math 7 2008 - 2012

Combined Percent at Levels 3 & 4

Monroe 1 BOCES Component Districts

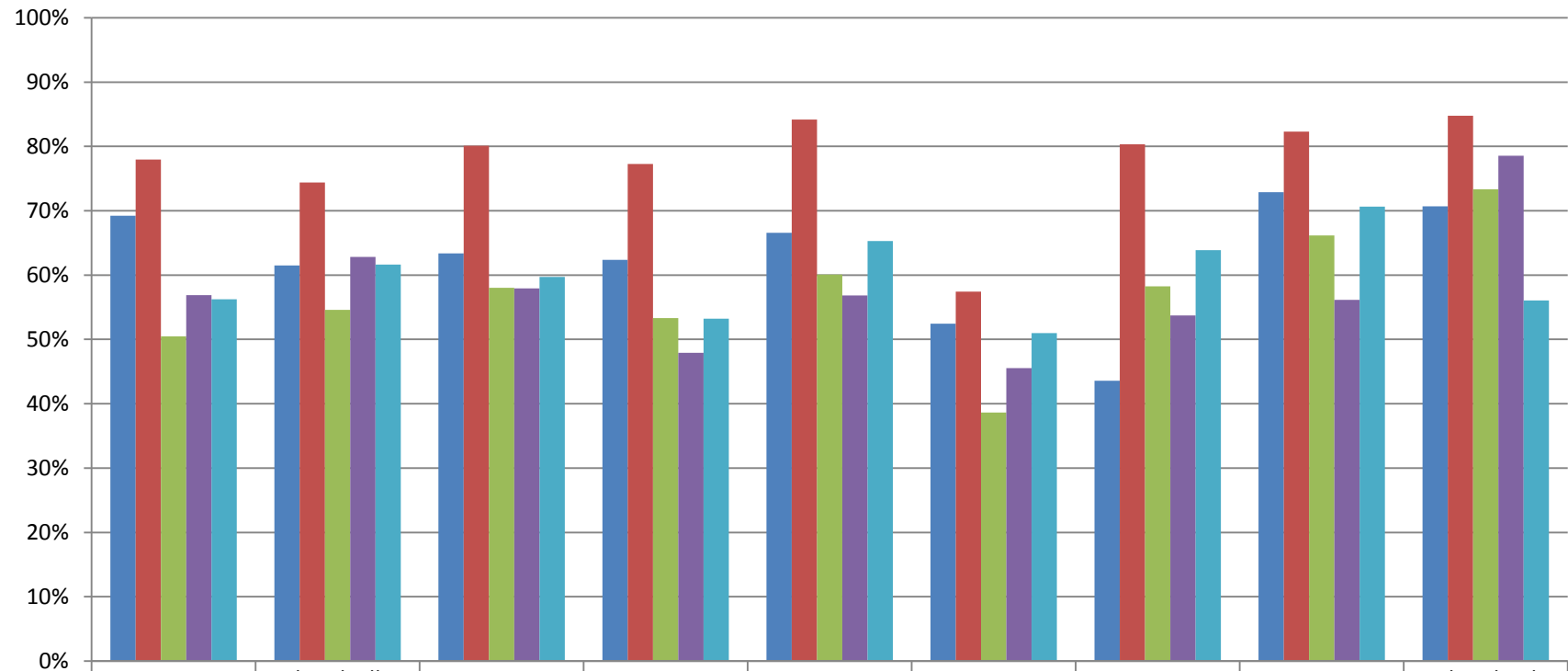


	Brighton	East Irondequoit	East Rochester	Fairport	Honeoye Falls Lima	Penfield	Pittsford	Rush Henrietta	Webster	West Irondequoit
06/30/08	91.5%	77.2%	84.5%	91.2%	94.8%	91.0%	96.1%	92.2%	93.1%	92.8%
06/30/09	96.7%	92.7%	86.0%	95.9%	98.9%	97.8%	98.7%	93.5%	96.6%	95.8%
06/30/10	76.2%	74.9%	67.9%	75.6%	89.3%	85.6%	91.1%	70.7%	82.8%	82.8%
06/30/11	82.3%	53.7%	61.3%	81.1%	86.7%	93.0%	92.8%	88.5%	82.9%	73.6%
06/30/12	87.7%	73.1%	50.6%	82.8%	89.4%	89.3%	92.6%	81.7%	84.3%	79.4%

ELA 8 2008 - 2012

Combined Percent at Levels 3 & 4

Monroe 2 BOCES Component Districts

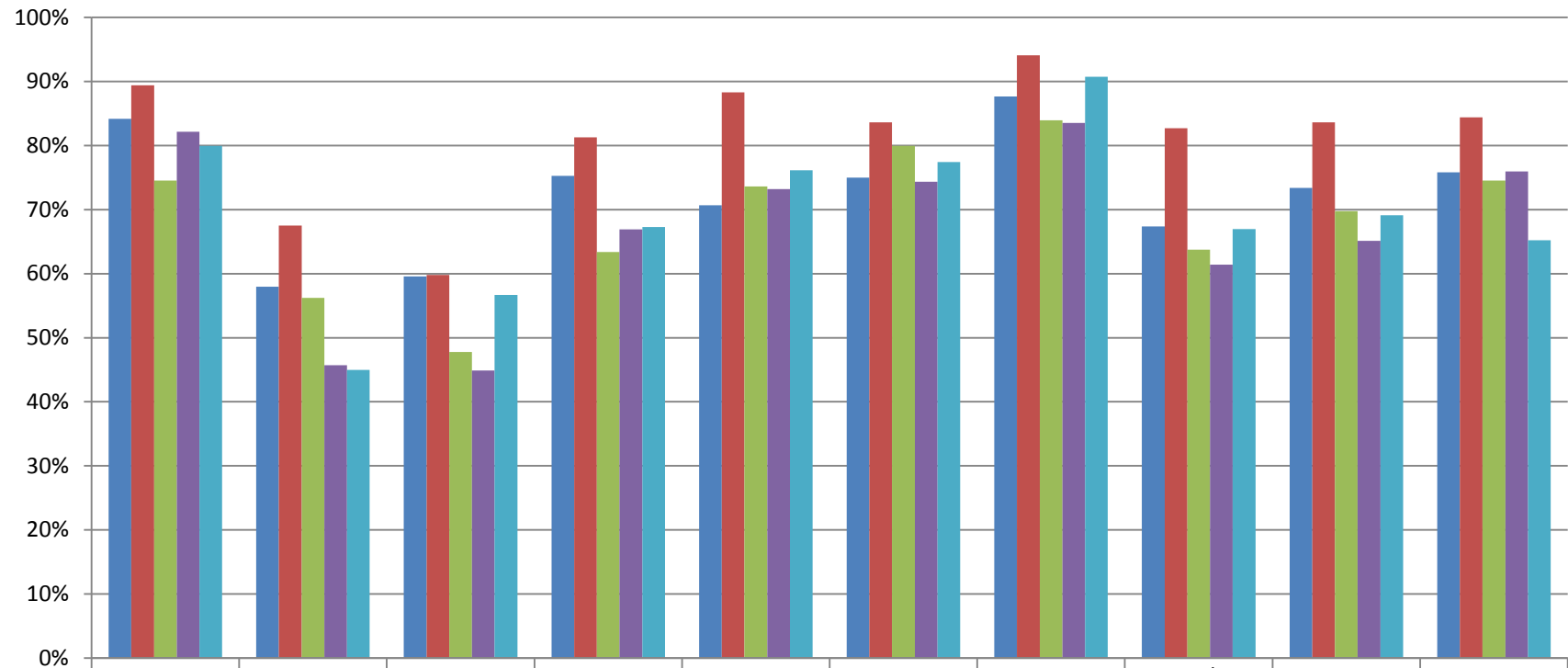


	Brockport	Churchville Chili	Gates Chili	Greece	Hilton	Holley	Kendall	Spencerport	Wheatland-Chili
06/30/08	69.2%	61.5%	63.4%	62.3%	66.6%	52.4%	43.6%	72.9%	70.7%
06/30/09	78.0%	74.4%	80.1%	77.3%	84.2%	57.4%	80.3%	82.3%	84.7%
06/30/10	50.5%	54.6%	58.0%	53.3%	60.1%	38.6%	58.2%	66.1%	73.3%
06/30/11	56.9%	62.8%	57.9%	47.9%	56.8%	45.6%	53.7%	56.2%	78.6%
06/30/12	56.2%	61.6%	59.7%	53.2%	65.3%	51.0%	63.9%	70.6%	56.1%

ELA 8 2008 - 2012

Combined Percent at Levels 3 & 4

Monroe 1 BOCES Component Districts

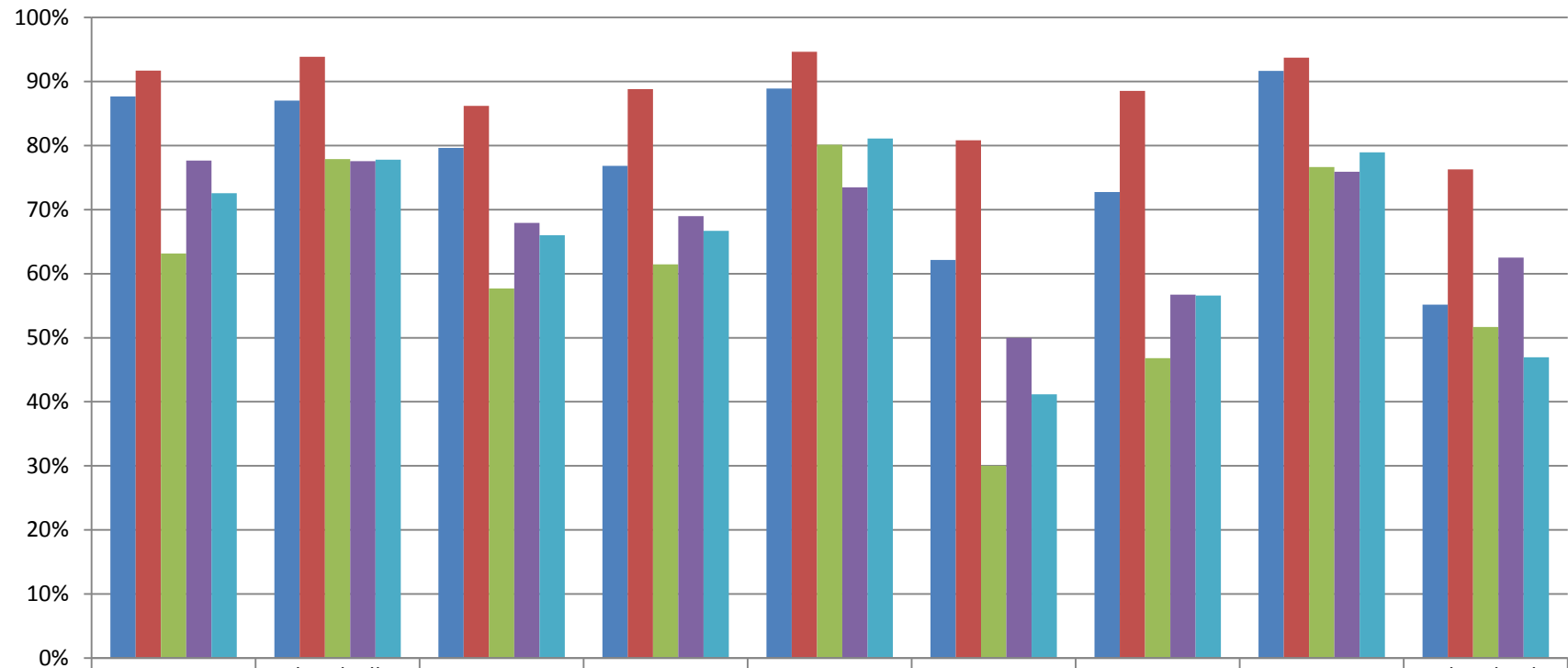


	Brighton	East Irondequoit	East Rochester	Fairport	Honeoye Falls Lima	Penfield	Pittsford	Rush Henrietta	Webster	West Irondequoit
06/30/08	84.2%	58.0%	59.6%	75.3%	70.7%	75.0%	87.7%	67.4%	73.4%	75.8%
06/30/09	89.4%	67.5%	59.8%	81.3%	88.3%	83.6%	94.1%	82.7%	83.6%	84.4%
06/30/10	74.5%	56.2%	47.8%	63.4%	73.6%	79.9%	83.9%	63.7%	69.8%	74.6%
06/30/11	82.1%	45.7%	44.9%	66.9%	73.2%	74.4%	83.5%	61.4%	65.1%	76.0%
06/30/12	79.9%	45.0%	56.7%	67.3%	76.1%	77.4%	90.7%	67.0%	69.1%	65.2%

Math 8 2008 - 2012

Combined Percent at Levels 3 & 4

Monroe 2 BOCES Component Districts

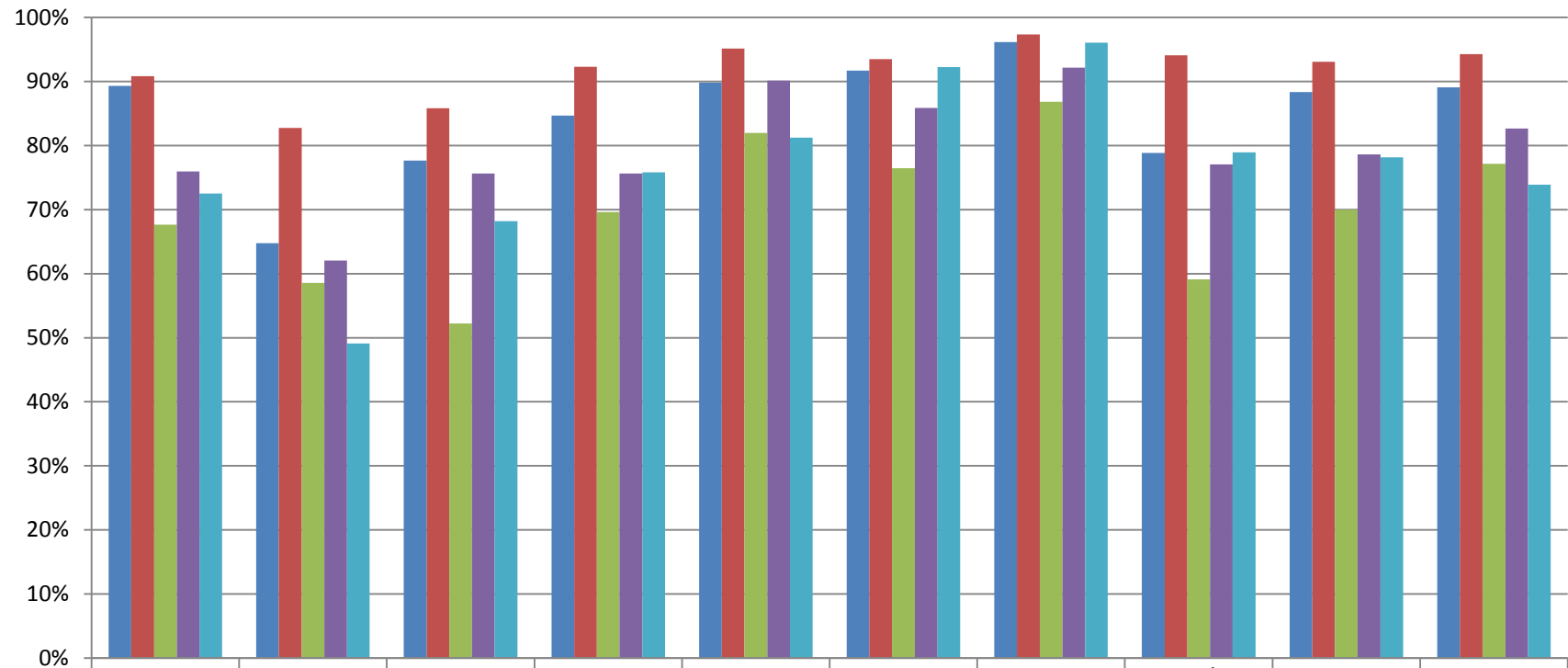


	Brockport	Churchville Chili	Gates Chili	Greece	Hilton	Holley	Kendall	Spencerport	Wheatland-Chili
06/30/08	87.7%	87.0%	79.6%	76.8%	88.9%	62.1%	72.7%	91.7%	55.2%
06/30/09	91.7%	93.9%	86.2%	88.8%	94.6%	80.8%	88.5%	93.7%	76.3%
06/30/10	63.2%	77.9%	57.7%	61.4%	80.1%	30.0%	46.8%	76.6%	51.7%
06/30/11	77.6%	77.6%	67.9%	69.0%	73.5%	50.0%	56.7%	75.9%	62.5%
06/30/12	72.6%	77.8%	66.0%	66.7%	81.1%	41.2%	56.6%	79.0%	47.0%

Math 8 2008 - 2012

Combined Percent at Levels 3 & 4

Monroe 1 BOCES Component Districts



	Brighton	East Irondequoit	East Rochester	Fairport	Honeoye Falls Lima	Penfield	Pittsford	Rush Henrietta	Webster	West Irondequoit
06/30/08	89.3%	64.7%	77.7%	84.7%	89.8%	91.7%	96.2%	78.9%	88.4%	89.1%
06/30/09	90.8%	82.7%	85.8%	92.3%	95.1%	93.5%	97.3%	94.1%	93.1%	94.3%
06/30/10	67.6%	58.5%	52.2%	69.6%	82.0%	76.5%	86.8%	59.1%	70.0%	77.1%
06/30/11	76.0%	62.0%	75.6%	75.6%	90.2%	85.9%	92.2%	77.1%	78.6%	82.6%
06/30/12	72.5%	49.1%	68.2%	75.8%	81.3%	92.3%	96.1%	79.0%	78.2%	73.9%